



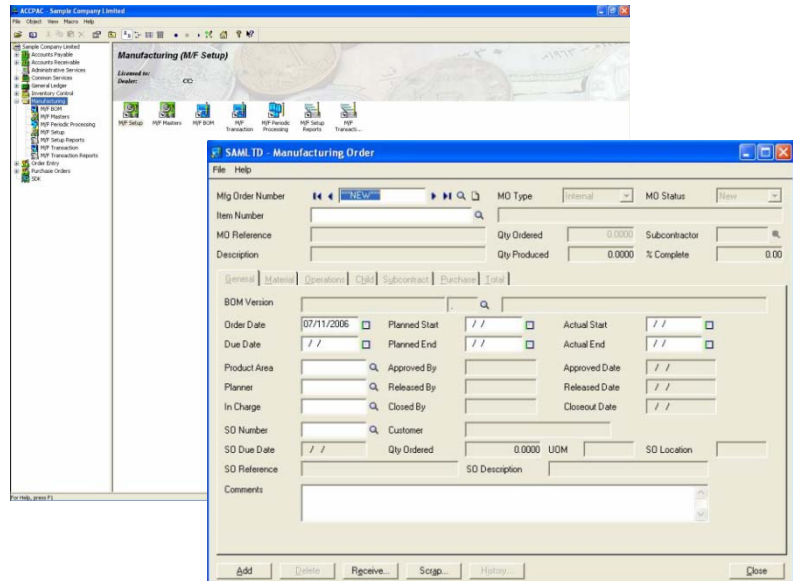
AUTOSIMPLY

Manufacturing Order

About AutoSimply

AutoSimply is a Sage Developer Partner since 2004. Founded by a group of ACCPAC consultants with over 10 years project experience, we know and understand fully what our customers really need. Our products are developed according to Sage ACCPAC SDK and built on world-class architecture. AutoSimply's Manufacturing Order, is a compact, user-oriented manufacturing processing solution that is integrated with Sage ACCPAC ERP. ACCPAC service providers and their customers will find our solution easy to deploy and use.

Visit us at www.autosimply.com or call 852-3154-9100 today for more information about AutoSimply Manufacturing Order.



AutoSimply's Manufacturing Order is an easy-to-use manufacturing solution for small to medium-sized enterprises. Using ACCPAC SDK, its design is fully integrated with Sage ACCPAC Finance and Logistics modules. Simple yet powerful, AutoSimply enables an efficient manufacturing operation flow covering material purchase, processing manufacturing orders, work in progress, routing cost calculation, material consumption, material scrap and item substitution and order closeout. The design of AutoSimply's Manufacturing Order is conceptualized to fully accommodate users' business processes needs and expectations.

Features

Multi-level Bill of Materials

- Supports multi-level Bill of Materials (BOM) structure.
- Unlimited number of BOM codes and revision numbers per item code.
- BOM based on standard formulation quantity for each product.
- Define scrap factors/production allowances for each component in the BOM.
- Archive Engineering Change Notice (ECN) information for each BOM structure.
- Use the different BOM status to manage items structure information.

Manufacturing Order Processing

- Plan, schedule, release and track manufacturing orders (MO) to better manage the production floor.
- Link MO with outstanding child or subcontract MO's.
- Link MO with open sales orders (ACCPAC OE) and purchase orders (ACCPAC PO).



AutoSimply

Manufacturing Order

- Perform full and partial material issuances
- Record production scrap and return of materials from the shop floor.
- Perform full and partial product receipts.
- Close out manufacturing orders (MO) and calculate actual costs and production variances

Online Average Costing

- Cost of production is calculated at the point of posting.
- Material issuance cost is based on actual ACCPAC IC inventory issuance cost.
- Finished good production cost is calculated as the sum of actual material issuance cost plus applied resource and tools cost divided by actual produced quantity.
- In order to accommodate partial manufacturing receipts, output is cost initially based on standard costs but is recomputed to actual upon MO closeout.

Operation-based Manufacturing

- Production floor is divided into work centers which are in turn accessed through production routing operations.
- Material components in a BOM is assigned to a distinct operation in the bill of manufacturing.
- Perform material issuances or returns by operation instead of just by MO.
- Perform production scrap by operation.
- Perform WIP allocation by operation.
- Perform material receipts by operation instead of just by MO.

Operation-based Standard Costing

- Production costs are classified as material costs, overhead costs, labor costs and tool costs.
- Material costs are further categorized as either direct or packaging.
- Material (direct and packaging) standard costs are derived from ACCPAC IC standard costs.
- Overhead costs can be fixed or variable.
- Labor costs are composed of setup labor and direct or run-time labor costs.
- Resources and tools can be applied to work centers for costing purposes.
- Assembled standard costs derived from the BOM can be exported to ACCPAC Standard Costs.

Work in Process (WIP) Monitoring

- Materials issued from ACCPAC to an open Manufacturing Order (MO) is considered WIP
- Manufacturing Orders may be grouped into Production areas/zones for purposes of tracking and management
- WIP is consumed via the MO allocation transaction
- MO closeout automatically allocates unconsumed WIP
- Users have the option to keep track of WIP in the shop floor and generate current or historic WIP reports.

Component Substitution

- Provides for multiple component substitutes rated according to preference
- Allows user triggered component substitution during MO Issuance based on inventory availability

Tools Monitoring and Costing

- Tools are assets which are consumed during the manufacturing process
- Consumption of tools may be fixed or variable
- Tools can be categorized to user-defined tool types with pre-defined standard costs
- The Tool Master allows the maintenance of actual tools with beginning quantities and actual costs.
- These tools are applied to MO's and contribute to the actual product cost posted to ACCPAC IC.

Reporting

- Item History Report
- Manufacturing Order (MO) History Report
- Manufacturing Order (MO) Status Report
- Production Variance Report
- Material Usage Report
- Production Output Report



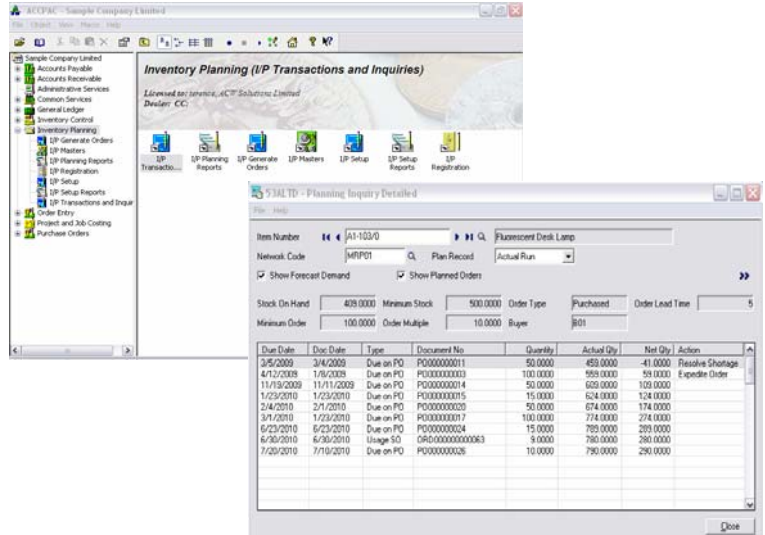
AUTOSIMPLY

Inventory Planning

About AutoSimply

AutoSimply Company Limited is a Hong Kong based Sage Developer Partner since 2004. Founded by a group of ACCPAC consultants with over 10 years project experience, we know and understand fully what our customers really need. Our products are developed according to Sage ACCPAC SDK and built on world-class architecture. AutoSimply's Inventory Planning (I/P), is a compact, user-oriented MRP planning solution that is fully integrated with Sage ACCPAC ERP. Both ACCPAC service providers (SP) and their customers will find our solution easy to deploy and use.

Visit us at www.autosimply.com or call 852-3154-9100 today for more information about our Inventory Planning (I/P) module.

Due Date	Doc Date	Type	Document No.	Quantity	Actual Qty	Net Qty	Action
3/5/2009	2/4/2009	Due on PO	PO00000011	50,000	459,000	-41,000	Resolve Shortage
4/12/2009	1/6/2009	Due on PO	PO00000003	100,000	959,000	59,000	Expedite Order
11/19/2009	11/11/2009	Due on PO	PO00000014	50,000	620,000	100,000	
1/23/2010	1/23/2010	Due on PO	PO00000015	15,000	624,000	124,000	
2/4/2010	2/1/2010	Due on PO	PO00000020	50,000	674,000	174,000	
3/1/2010	1/22/2010	Due on PO	PO00000017	100,000	774,000	274,000	
6/2/2010	6/23/2010	Due on PO	PO00000024	15,000	789,000	299,000	
6/30/2010	6/30/2010	Usage SO	OR00000000063	9,000	780,000	290,000	
7/20/2010	7/19/2010	Due on PO	PO00000026	10,000	790,000	290,000	

The Inventory Planning (I/P) module is an easy to use Materials Requirement Planning (MRP) solution for small to medium-sized trading enterprises. With I/P, trading companies can now generate full scale MRP for all their inventory items.

By planning ahead, I/P minimizes inventory stock, prevents item shortages leading to improvement in customer service levels. With I/P, inventory planners actually spend more time planning instead of just tracking, compiling and calculating stock requirements.

Developed using ACCPAC SDK, I/P is fully integrated with Sage ACCPAC's Financial and Logistics modules. AutoSimply I/P makes full use of the sales information in ACCPAC O/E, stock data within ACCPAC I/C and purchase information in ACCPAC P/O in generating a realistic purchase plan.

Main Features

Available to Promise (ATP)

- Allows salesmen to query and view online the available to promise quantity of selected items
- Provide stock inventory information such as on hand quantity, PO on order quantity, SO allocated quantity by location
- Displays the default sales price based on ACCPAC I/C
- Displays summary customer credit status based on ACCPAC A/R
- Includes a date-based sales history information
- Displays detailed item planning information for the selected item



AutoSimply

Inventory Planning

Buyer Information

- Allows definition of unlimited number of buyers for purchased I/C materials
- Create planned purchase orders by buyer
- Generate planning inquiries by buyer

Item Planning Information

- Allows the user to define safety stock levels for each item record in I/C
- User may also define an order multiple (e.g. purchase unit) for each I/C item
- Purchase Lead Time can be maintained for each I/C item
- Option to automatically generate planned orders for selected items

Minimum Order (Lot)

- Generate realistic purchase plans with minimum order quantities per item
- Minimum order levels are useful to simulate purchase economic order quantities (EOQ) and supplier minimum order requirements

Consumption of Sales Forecasts

- Sales forecasts can be inputted or imported for use during planning runs
- Actual ACCPAC O/E sales orders can consume user-defined sales forecasts thus preventing excessive estimation of item demand.
- Consumption tolerance can be defined by using backward and forward consumption days

Flexible I/C Location Coverage

- User-defined I/P Distribution Networks determine the scope of MRP planning runs
- I/P Distribution Networks are used to group I/C Locations to form supply chains
- Supports unlimited number of I/P Distribution Networks

Planning Calendar

- Allows user-defined working and non-working days
- Sets the default working days for a normal week

Simplified Planning Runs

- User-friendly planning run interface requires only one click of a button to run the entire MRP planning process
- Includes option to exclude I/C stock, P/O orders, O/E orders
- Includes option to ignore minimum stock levels and work calendar

“What If” Scenarios

- Allows four (4) other planning records per Distribution Network to simulate “What If” scenarios
- Option to copy a source planning record to any target planning record

Auto Generation of Purchase Requisitions

- Planned orders can be automatically converted to P/O Requisitions via the I/P Generate PR routine
- Buyer has the option to combine or generate separate P/O Requisitions
- Buyer has the option to change order dates, due dates and order quantities for planned orders prior to generating P/O Requisitions

Reporting & Inquiries

- MRP Summary Report
- MRP Summary Report by Buyer
- Purchase Advice Report – Summary
- Purchase Advice Report – Detailed
- Item Planning Inquiry – Summary
- Item Planning Inquiry – Detailed
- Sales Forecast Report

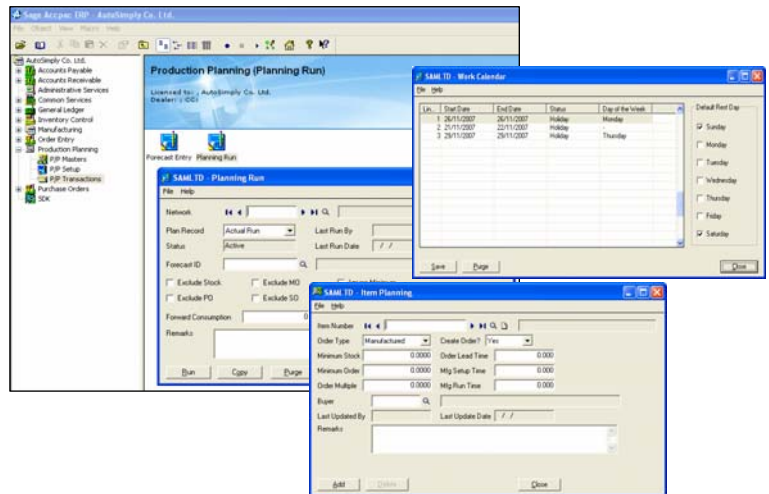


AUTOSIMPLY

Production Planning

About AutoSimply

AutoSimply is a Sage Developer Partner since 2004. Founded by a group of ACCPAC consultants with over 10 years project experience, we know and understand fully what our customers really need. Our products are developed according to Sage ACCPAC SDK and built on world-class architecture. AutoSimply's Production Planning (P/P), is a compact, user-oriented MRP planning solution that is fully integrated with Sage ACCPAC ERP. ACCPAC service providers and their customers will find our solution easy to deploy and use.



AutoSimply's Production Planning module is an easy-to-use production scheduling and materials requirement planning solution for small to medium-sized enterprises. Developed using ACCPAC SDK, it is fully integrated with Sage ACCPAC's Financial and Logistics modules.

The P/P module is the second installment of AutoSimply's manufacturing suite for ACCPAC. It makes full use of the manufacturing and BOM information in AutoSimply's Manufacturing Order (M/F), sales information as contained in ACCPAC O/E, stock data within ACCPAC I/C and purchase information in ACCPAC P/O.

With AutoSimply's P/P module, ACCPAC can now truly generate a full blown basic MPS and MRP plan!

Visit us at www.autosimplify.com or call 852-3154-9100 today for more information about AutoSimply Production Planning (P/P).



Features

Flexible I/C Location Coverage

- User-defined P/P Distribution Networks determine the scope of individual MPS/MRP planning runs
- P/P Distribution Networks are composed of ACCPAC I/C Locations
- Allows users to group or ungroup I/C Locations to form networks
- Supports unlimited number of P/P Distribution Networks.



AutoSimply

Production Planning

Buyer/Planner Information

- Allows definition of unlimited number of buyers for purchased I/C materials
- Allows definition of unlimited number of planners for manufactured I/C products
- Create planned purchase orders by buyer and planned MO's by planner
- Generate planning inquiries by buyer or planner

Item Planning Information

- Allows the user to define safety stock levels for each item record in I/C
- User may also define an order multiple (e.g. purchase unit) for each I/C item
- Purchase and Manufacturing Lead Time can be maintained for each I/C item
- Option to automatically generate planned orders for selected items

Minimum Order (Lot)

- Generate realistic purchase or production plans with minimum order quantities per item
- Minimum order levels are useful to simulate purchase economic order quantities (EOQ) and supplier minimum order requirements
- Minimum order levels are also useful in simulating work center minimum batch or lot requirements

Consumption of Sales Forecasts

- Sales forecasts can be inputted or imported for use during planning runs
- Actual ACCPAC O/E sales orders can consume user-defined sales forecasts thus preventing excessive estimation of item demand.
- Consumption tolerance can be defined by using backward and forward consumption days

Production Calendar

- Allows user-defined working and non-working days
- Sets the default working days for a normal week

Simplified Planning Runs

- User-friendly planning run interface requires only one click of a button to run the entire MRP planning process
- Includes option to exclude I/C stock, P/O orders, O/E orders and M/F Manufacturing Orders
- Includes option to ignore minimum stock levels and work calendar

“What If” Scenarios

- Allows four (4) other planning records per Distribution Network to simulate “What If” scenarios
- Option to copy a source planning record to any target planning record

Auto Generation of PR's and MO's

- Planned orders can be automatically converted to P/O Requisitions
- Planned orders for products can be automatically converted to M/F Manufacturing Orders

Reporting & Inquiries

- MRP Summary Report
- MRP Summary Report - Costed
- Purchase Advice Report – Summary
- Purchase Advice Report – Detailed
- Production Advice Report – Summary
- Production Advice Report – Detailed
- Item Planning Inquiry
- Planning Action Report



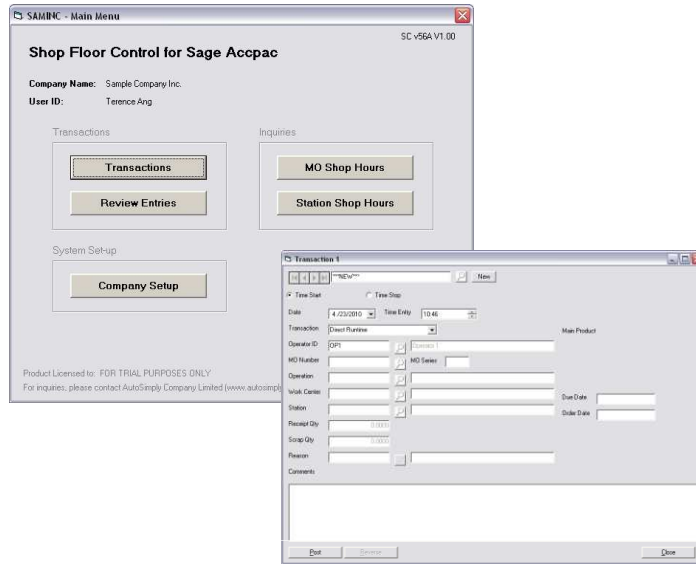
AUTOSIMPLY

M/F Shop Floor Control

About AutoSimply

AutoSimply Company Limited is a Sage Accpac Developer Partner. We are focused on developing built-in manufacturing and material planning solutions for Accpac. By using Accpac's very own SDK, all our products are fully integrated with Accpac. Based on a design of simplicity and ease of use, Accpac Service Providers and end users will find our products easy to implement and use.

Visit us at www.autosimplify.com or call 852-2366-8392 today for more information.



The M/F Shop Floor Control (S/C) module allows users to record time entries and shop transactions of MO operations. It provides detailed production data between the release of MO to the receipt of MO order quantity.

Shop transactions include the setting up of the work station to the actual runtime and receipt of operation output. In addition, S/C also tracks the occurrence of station downtime (e.g. machine breakdown) and occasional indirect stoppage (e.g. meetings).

The S/C module effectively replaces the production logs with an online system linked to the MO data of M/F. With M/F, AutoSimply S/C provides management with operation status updates and periodic operation efficiencies and work station utilization data.

Main Features

Shop Floor Time Entries

- Option to use either time from-to entries or stop-start entry mode
- Users enter the daily time records for each operation in the MO (e.g. 9 am to 10 am)
- Types of time entry option include Setup, Runtime, Downtime, Indirect Stoppage and Rework
- Option to enter shift, operator and station information used in actual MO operation

Continued ►



AutoSimply

M/F Shop Floor Control

Fully Integrated with M/F

- Shop entries are linked to MO operations based on BOM routing information
- M/F MO Entry determines list of operations involved in MO processing
- MO Operation work centers determines possible work stations for use in MO processing

Shift – Operator Maintenance

- Define unlimited number of shift records
- Define unlimited number of operator records
- Assign users into shifts for grouping and reporting

Station Maintenance

- Define unlimited number of stations
- Used to identify a machine or work station within a work center
- Define a standard number of work hours per station per day

Reason Code Maintenance

- Define unlimited number of reason codes for use during shop transaction entry
- Supports the following reason types – Downtime, Indirect Stoppage or Rework
- Reason codes are group by Work Center to minimize list of choices during shop entry

Shop User Maintenance

- Define user ID's and log-on information for the Shop Transaction Screen
- Option to define default operator, operation, work center and station per user
- Determines the time entry method to be used
- Shop Users are independent of Accpac User ID's

Station Idle Time Calculation

- Automatic calculation of total idle time per station
- Calculation considers total setup, runtime, rework, downtime and stoppage and compares versus standard station hours
- Station utilization is compared against standard utilization rates for the Work Center

Resource Cost Allocation

- Supports cost allocation to MO records based on user entered costs values
- Cost allocation can be by Shop Hours as entered in Shop Floor or by Material Cost
- Option to generate G/L entries during posting
- Option to update MO Actual Cost column in MO Entry

Reporting & Inquiries

- MO Shop Hours Query
- Station Shop Hours Query
- MO Operation Shop Query
- Shop Entries by Operator Query



852-2366-8392 · www.autosimply.com

© 2009 AutoSimply Company Ltd. All rights reserved. AutoSimply Software, AutoSimply Software logos, and all AutoSimply product and service names are registered trademarks or trademarks of AutoSimply Company Ltd., or its affiliated entities. All other trademarks are the property of their respective owners.

© Sage Accpac is registered trademarks of Sage Software, Inc.