



# SAP Business One Road Map

October 2021

PUBLIC

# Legal disclaimer

The information in this presentation is confidential and proprietary to SAP and may not be disclosed without the permission of SAP. This presentation is not subject to your license agreement or any other service or subscription agreement with SAP. SAP has no obligation to pursue any course of business outlined in this document or any related presentation, or to develop or release any functionality mentioned therein. This document, or any related presentation, and SAP's strategy and possible future developments, products, and platforms, directions, and functionality are all subject to change and may be changed by SAP at any time for any reason without notice. The information in this document is not a commitment, promise, or legal obligation to deliver any material, code, or functionality. This document is provided without a warranty of any kind, either express or implied, including but not limited to the implied warranties of merchantability, fitness for a particular purpose, or noninfringement. This document is for informational purposes and may not be incorporated into a contract. SAP assumes no responsibility for errors or omissions in this document, except if such damages were caused by SAP's willful misconduct or gross negligence.

All forward-looking statements are subject to various risks and uncertainties that could cause actual results to differ materially from expectations. Readers are cautioned not to place undue reliance on these forward-looking statements, which speak only as of their dates, and they should not be relied upon in making purchasing decisions.

For all recent and planned innovations, potential data protection and privacy features include simplified deletion of personal data, reporting of personal data to an identified data subject, restricted access to personal data, masking of personal data, read access logging to special categories of personal data, change logging of personal data, and consent management mechanisms.

# About SAP road maps

Companies today are planning their digital journeys – transforming business models, reengineering business processes, and reimagining work.

**SAP road maps** highlight innovations that may help you plan and implement your digital journey. They span products relevant to lines of business in your industry and explain how our innovations may add value to your business.

In our road maps, you can learn about our innovations along four different timelines:

1. **Recent innovations** for our products that have been launched in the past weeks or months and can already be purchased
2. **Planned innovations** for our products that are intended to be launched in the short term or midterm
3. **Product direction**, providing a long-term perspective on high-level development plans for innovations for our solutions – inspired by your requirements
4. **Product vision**, providing a high-level and long-term business perspective on innovations for our products

# Table of contents

## Product overview

- Product description
- Key trends and customer needs
- Road map overview and major product updates

## Product road map

- Recent innovations
- Planned innovations
- Product direction

# Our technology strategy is aligned to deliver the Intelligent Enterprise

To successfully execute on our strategy and safeguard customer success, we must ensure that we have not only the right components for the Intelligent Enterprise (applications, platform, and intelligent technologies) but also the right technology strategy for these components to work in concert with one another.

Our technology strategy will focus on these pillars:



## Consumer-grade experience

Make sure that the business user's experience is as good as with consumer applications



## Built-in integration

Enable integrations with little or no effort to other SAP and third-party applications



## Powerful platform

Drive ecosystem growth by enhancing and publishing APIs, embracing diverse developer frameworks



## Cloud

Enable applications to run smoothly in the cloud by detaching the applications from the underlying infrastructure



## Applied intelligence

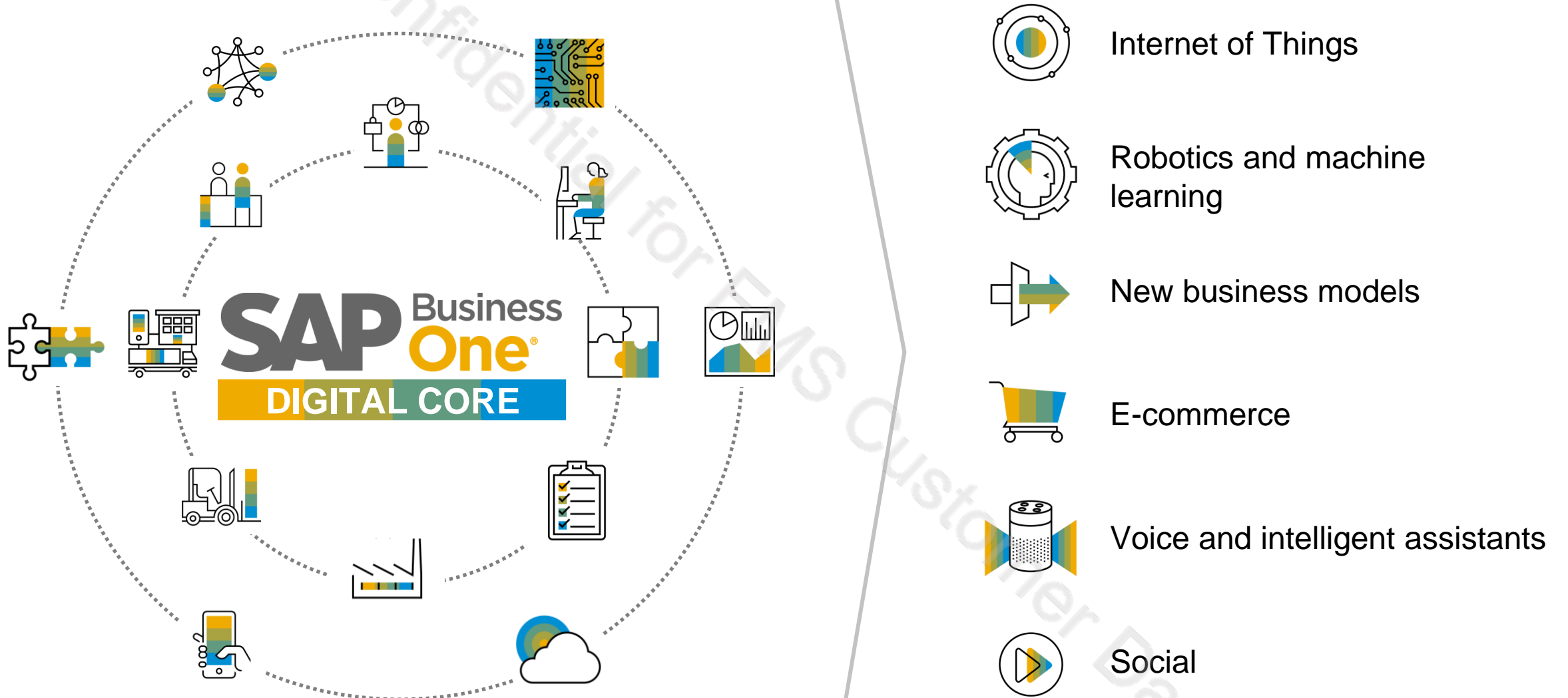
Embed artificial intelligence (AI), machine learning (ML), the Internet of Things (IoT), and advanced analytics technology to create business value

**“SAP Business One is a centerpiece of SAP’s strategy, and therefore we are strategically investing. We are making SAP Business One fit for the next generation, for the next decade, by enabling the digital services so the digital transformation can be done with SAP Business One.”**

Rainer Zinow, SVP, Head of SAP Midmarket Product Management, SAP SE  
December 2019



# The future of SAP Business One in the Intelligent Enterprise



# SAP Business One

SAP's best-selling ERP solution by number of customers



Used by **70,000+** customers, with **1.2+** million users



Implemented by more than **850** value-added resellers worldwide



Available as **50** country localizations and in **28** languages



SAP Business One used in **>170** countries



**~300** partners with **500+** solutions

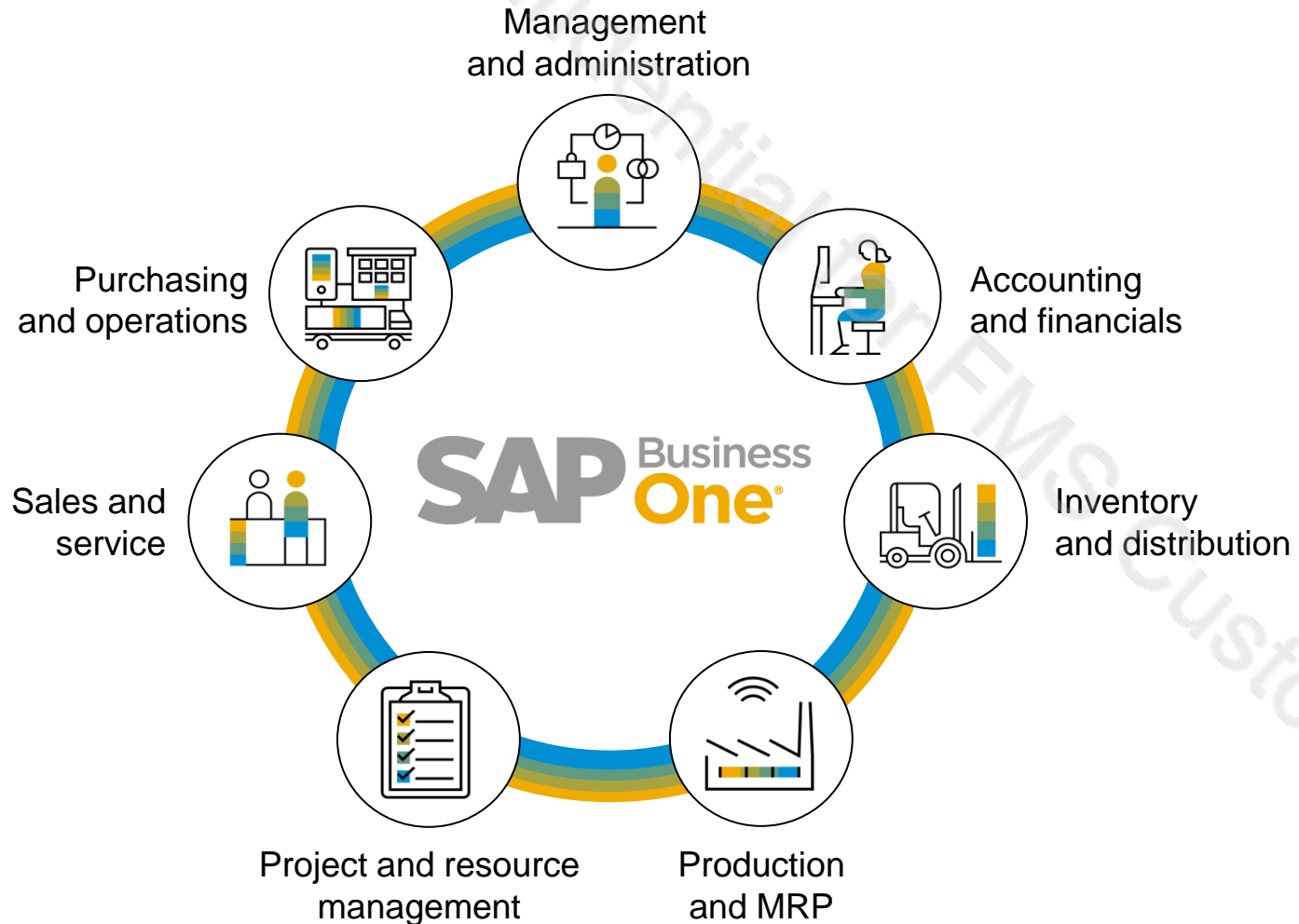


**360+** large enterprises running SAP Business One in **7,000+** subsidiaries



# SAP Business One

Digital platform for small and midsize enterprises (SMEs)



## Facts and figures:

>70,000 customers

50 country localizations and 28 languages

~300 partners with >500 solutions

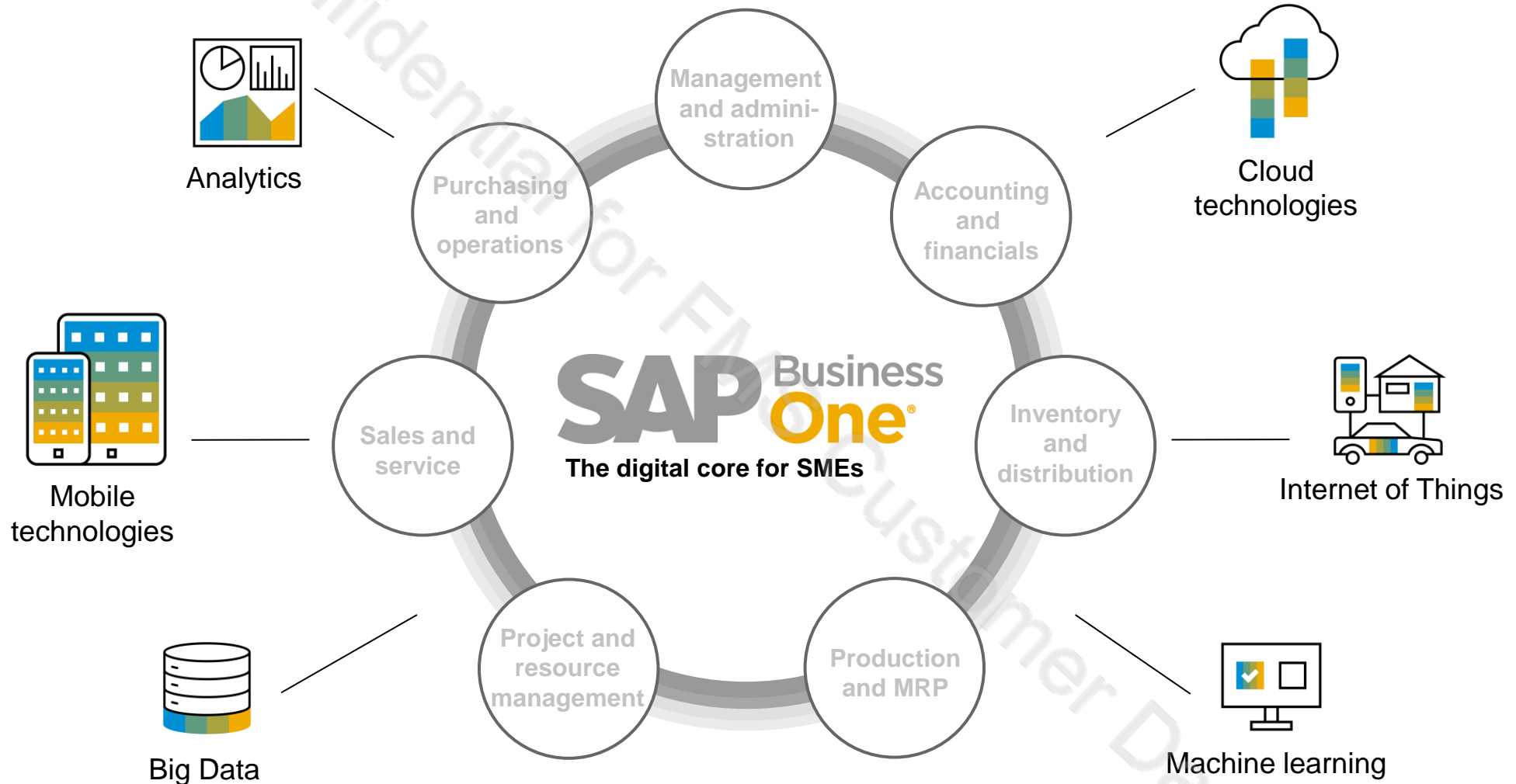
850 value-added resellers that implement worldwide

Used in >170 countries

>7,000 subsidiaries running SAP Business One

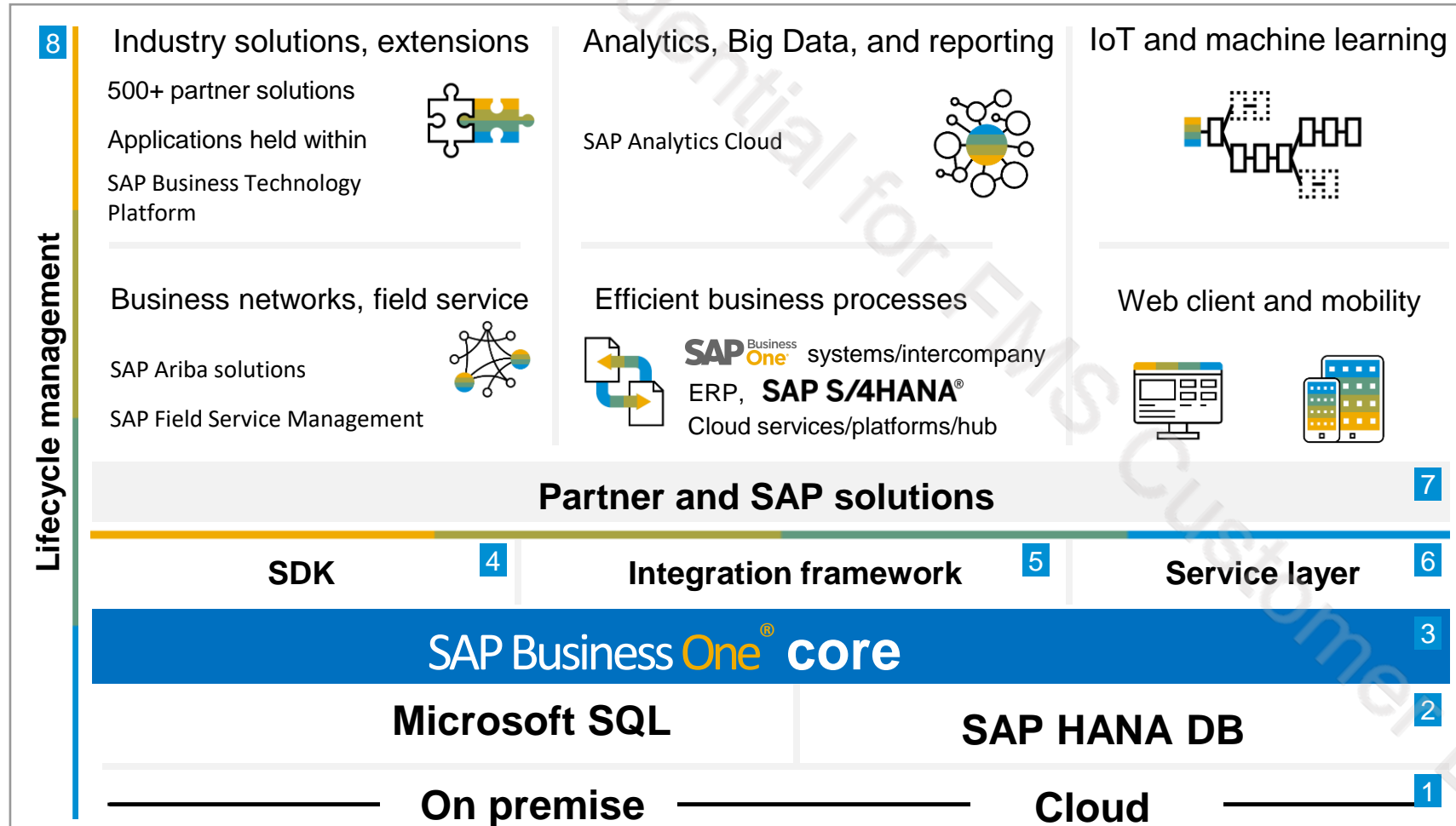
# The digital core for SMEs

Enhanced by the digital enablers



# SAP Business One solution stack

Customer needs and the value propositions of the product



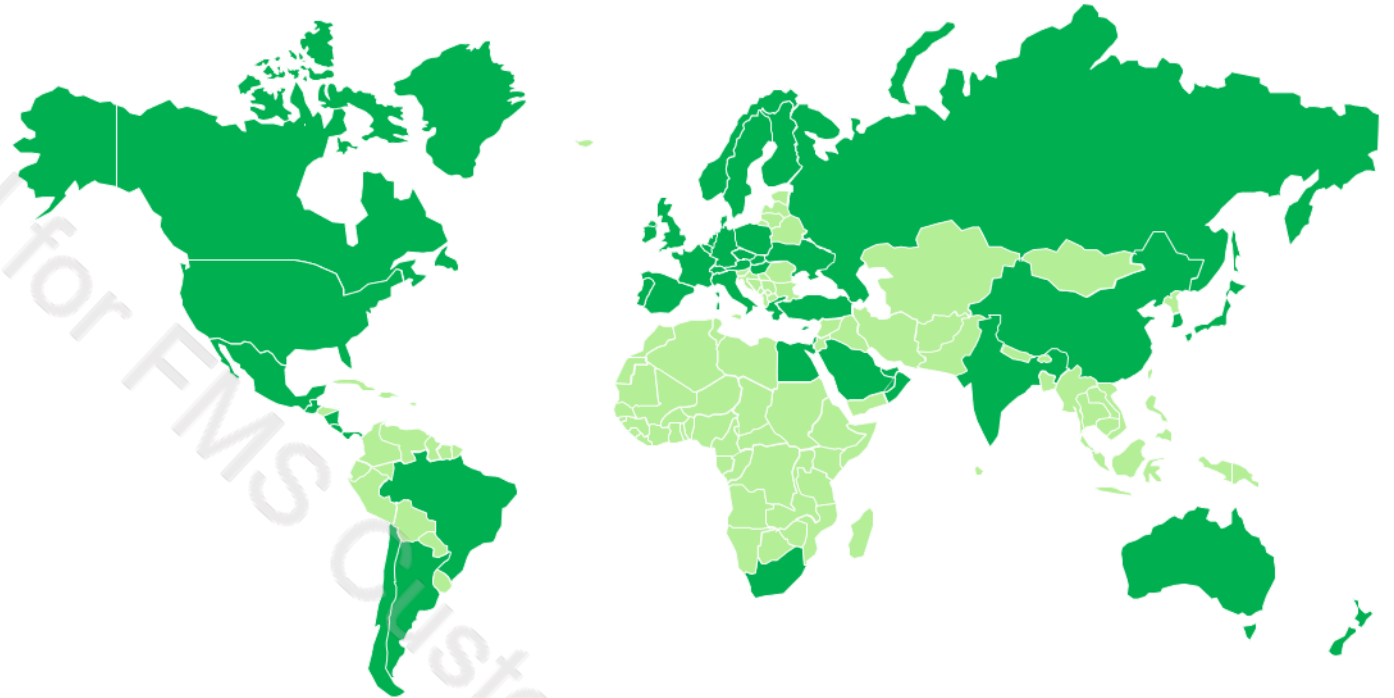
- 1 Full deployment flexibility
- 2 Runs on in-memory technology
- 3 All standard business processes covered
- 4 Basic application programming interfaces (APIs)
- 5 Robust integration and collaboration
- 6 Interface for SAP HANA and MS SQL applications
- 7 Extends the solution scope based on extensibility layer
- 8 Low cost of ownership and efficient support

# SAP Business One used in more than 170 countries

Master the challenge of globalization in your business

## Current localizations (50)

Argentina	Finland	Mexico	Slovakia
Australia	France	Netherlands	South Africa
Austria	Germany	New Zealand	South Korea
Belgium	Greece	Norway	Spain
Brazil	Guatemala	Oman	Sweden
Canada	Hong Kong, China	Panama	Switzerland
Chile	Hungary	Poland	Turkey
China	India	Portugal	Ukraine
Costa Rica	Ireland	Puerto Rico	United Arab Emirates
Cyprus	Israel	Qatar	United Kingdom
Czech Republic	Italy	Russia	United States
Denmark	Japan	Saudi Arabia	
Egypt	Lebanon	Singapore	



## Countries making use of localizations

Customers in more than 120 countries use localization of other countries, own customization, or partner solution.

## Current system languages (28):\*

Arabic, Chinese (simplified/traditional), Czech, Danish, Dutch, English (UK/U.S.), Finnish, French, German, Greek, Hebrew, Hungarian, Italian, Japanese, Korean, Norwegian, Polish, Portuguese (Brazil), Portuguese, Russian, Slovak, Spanish (Latin America), Spanish, Swedish, Turkish, and Ukrainian

\*Convenient option to make additional languages available is using a partner solution (for some countries bundled with functional add-ons) or to define customer-specific UI terms using the custom language tool as detailed in SAP Note [1757764](#).

# SAP Business One

Product areas of future investment

**Vision: Strengthen SAP Business One as the right ERP for SMEs in the digital economy, offering flexible deployment models, a solid global business core, and leading user experience**

**Global and highly scalable real-time ERP**

Provide a highly competitive solution, attractive maintenance model, enhanced localizations, and continuous improvements

**Customer value in the digital economy**

Transform flexible technology and innovations into customer value at low TCO; support fast adoption to new business models, customer growth, and intuitive Web client design

**Full commitment on SAP HANA**

Leverage exclusive advantages and capabilities of SAP HANA

**Intuitive partner co-innovation and customization**

Adopt integration framework 2.0, offer advanced developer experience on the service layer, including new design concepts, APIs, objects, and tools

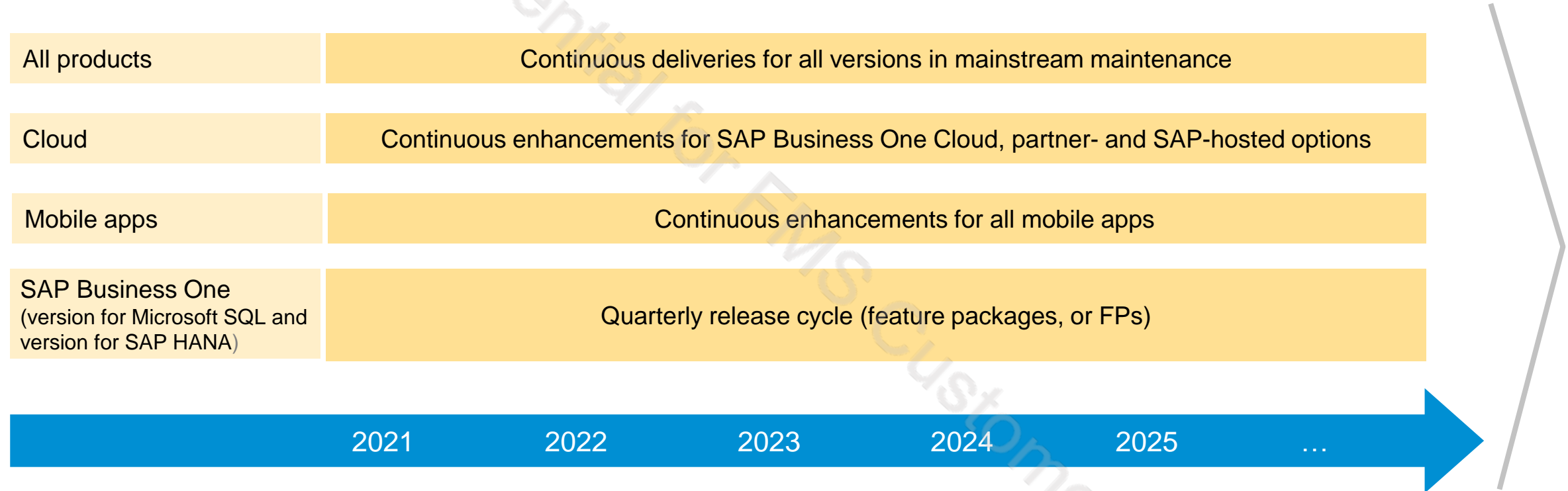
**Straightforward consumption – cloud, on premise, and mobile**

Accelerate the cloud transformation and drive mobile adoption; offer maximum flexibility, low complexity, and best control of the business for customers

This is the current state of planning and may be changed by SAP at any time.

# SAP Business One releases and related products

Solid product road map with continuous innovation



Schematic illustration of major deliveries

This is the current state of planning and may be changed by SAP at any time.



# High-level release story of SAP Business One, version 10

**Version 10 focuses on ease of use and operation in the cloud. With its new or enhanced features and further ways to extend and integrate, it brings unprecedented value to customers and partners.**

**This makes companies truly intelligent enterprises. The new technologies and processes allow for completely new and improved business models.**

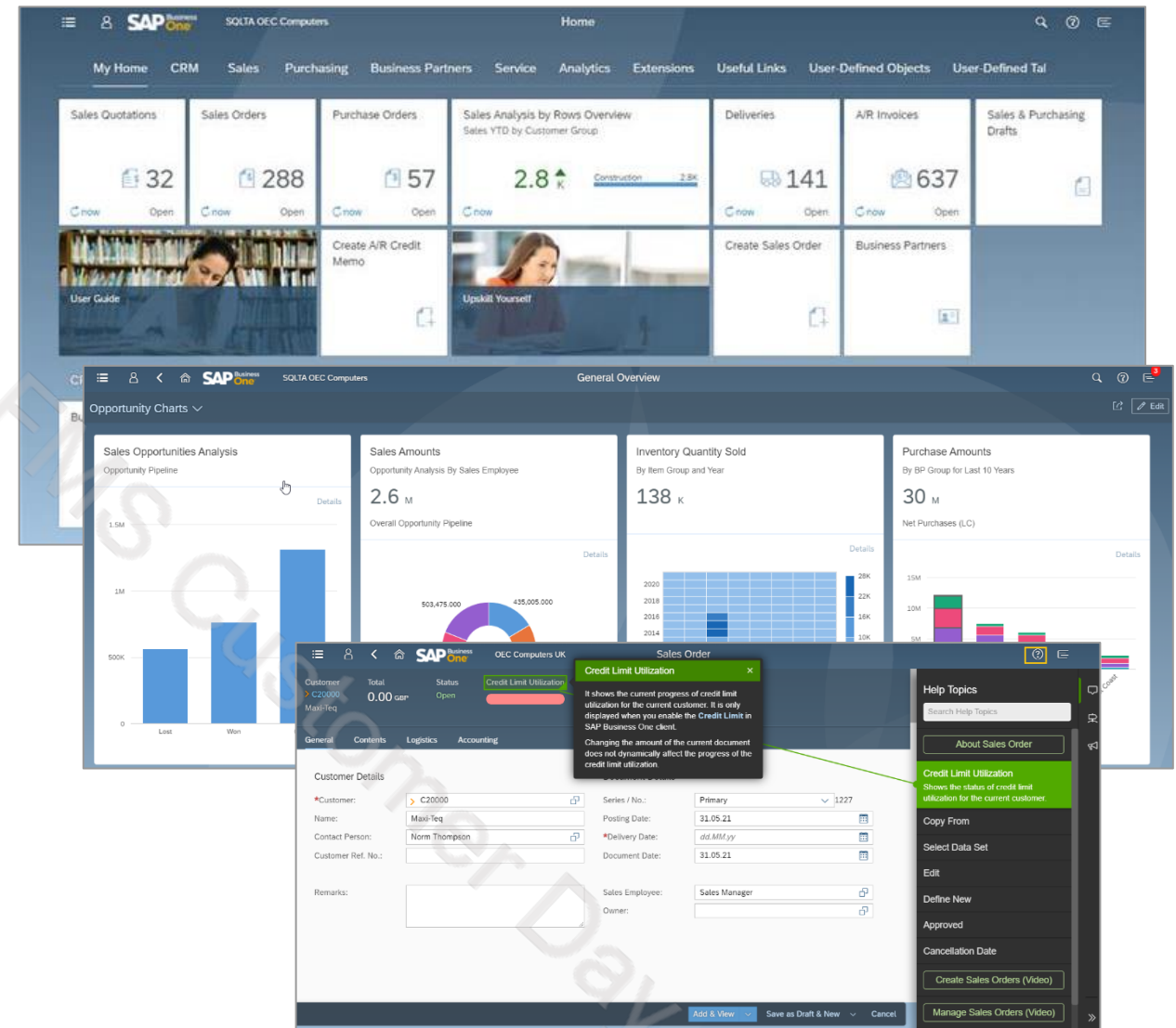
- The release **adds value by functions**, such as completed and new localizations and refined features, as well as by supporting cutting-edge technology such as SAP HANA 2.0, machine learning, and new analytical capabilities.
- The **user experience** is boosted by a new Web client, designed based on intuitive SAPUI5 concept.
- The unique selling proposition of a **powerful and intuitive integration** is also significantly enhanced by major improvements in the **integration framework 2.0** and by additional **predefined integration scenarios**.

The logo for SAP Business One Version 10. 'SAP' is in large, bold, grey letters. 'Business One' is in smaller, grey letters, with 'One' in yellow. 'Version 10' is in large, bold, grey letters below it.

**SAP** Business  
**One**<sup>®</sup>  
**Version 10**

# Web client for SAP Business One: The best of all worlds

- Based on SAP Fiori design principles, encapsulating SAP Business One core processes and business logic
- Focused on creation, processing, and updating CRM and sales documents, purchase order, and purchase quotation
- Support for creation and update of items, business partners, and activities
- Support for service calls and solution knowledge base
- Sophisticated analytic charting capabilities and predefined analytics content
- Flexible deployment options – on-premise and in the cloud, can be used side by side with the SAP Business One client
- Support for Microsoft 365 integration (Excel)
- Support for extensibility – user-defined tables (UDTs), user-defined fields (UDFs), user-defined objects (UDOs), URL mashup, and SAP Fiori and HTML5 app support
- Web assistant service



# SAP Business One 10.0, FP 2108: Key highlights (1/6)



## Web client

Create, process (incl. copy to/copy from), preview and print sales quotations, orders, deliveries, returns, A/R invoices, A/R reserve invoice, and A/R credit memo\*

Create, process, preview, and print sales opportunities

Create, process, preview, and print purchase quotation and purchase order

Preview and print other A/P documents

Outgoing SnB/Bin location selection

Service calls and solution knowledge base support

Relationship map

Approval process and drafts

Create and update business partner (BP) and item master data

BP catalog number support

Multiple branches

Freight charges

Exchange rate entry

Authorizations and data ownership

Extend localization coverage

Create and process activities and notifications

Advanced analytics content and editor

Enterprise search

**SAP HANA®**

Supported on SAP HANA and MS SQL database servers

Support for single sign-on (SSO)

User-defined fields, tables, and objects

Support for message preferences

Customizable home page

Flexible list views

Support for 28 display languages

High-contrast UI theme

Microsoft 365 (Excel)

VSCODE plug-ins (URL mashup, apps), iFrame as a tile support

Web assistant support



## Financial management

Drill down to G/L accounts in financial reports

Posting periods enhancements

Journal entry remarks extended to 254 characters

Financial enhancements

System messages before adding journal entries

Extended journal entry references

Updated journal entries with locked posting periods

Better printing preferences for payments and deposits

Report refresh enablement

Management of change log for exchange rates

# SAP Business One 10.0, FP 2108: Key highlights (2/6)



## Localizations | Legal compliance

EU PEPPOL electronic invoicing support

Support for external VAT calc. in more localizations\*

Multiple branches in year-end closing for all locs.

Create quick response (QR) codes in documents

Inventory valuation simulation report for all locs.

New UK (Brexit localization)

Auto. journal entry creation for month-to-date (MTD) in the UK

Electronic document framework enhancements

Support reference documents through Data Interface (DI) API

Helping ensure legal compliance and additional data protection and privacy (DPP) tools

Chart of accounts migration wizard for Portugal

Electronic documents service and enhancements

E-books and expense classification enhancements for Greece

Mass UUID import for purchasing documents – Mexico

EU Intrastat enhancements

Localization migration utility for the UK and Greece

Inflation revaluation wizard for Argentina

Down payment invoice tax calculation enhancement for the United States and Canada

Standard audit file update for VAT returns – Poland

VAT exemptions for Costa Rica

Escfile.map enhancement for Israel

Nota fiscal eletrônica (NF-e) 4.0 electronic invoicing for Brazil

XRechnung e-invoices for Germany

Online VAT ID validation for the EU

Tax collection at source (TCS) on sales of goods for India

Bank statement processing (BSP) balance validation

Withholding tax enhancements for Mexico

Certificazione Unica enhancements for Italy

Online invoicing for Hungary

EU Sales Report and Report 349 enhancements for Spain

Form 1099 – NEC for the United States

SAP Crystal Reports layouts for Switzerland

E-billing enhancements for India

E-way bill enhancements for India

ISO 3166 country codes support

Electronic tax invoice for Russia

Fraud prevention headers version 3.0 (MTD) support for the UK

QR code on A/R invoice for Argentina and Portugal

Electronic invoice enhancement 2022 for Italy

Series enhancements for period-end closing, exchange rate, and conversion rate differences

\*All localizations supported except Israel

# SAP Business One 10.0, FP 2108: Key highlights (3/6)



## Sales | Purchasing | Service

Allow update due date in part. reconciled invoices

Backorder report enhancements

“Add and view” and “Add and close” in A/R and A/P docs

Printing service calls and contacts

Hide blank lines in addresses

Proc. confirmation wizard support for gross and net modes

Open item list enhancements

Enable updating UDFs in closed documents

Set problem types, call status, and more as “Active”

Flexible default “Valid until” date in sales quotation

Link same equipment card to multiple BPs

New document status “Open e-mailed”

Extended business partner effective price sources

Ability to hide document remarks

Copy attachment paths to target documents

Cancellations of return requests

Display item description in alternative items window

Update consolidating business partner and consolidation type at document level

Document reference enhancement

Customer and vendor reference number enhancement

Document information extraction integration enhancement incl. service-type document support

Display sales document in procurement wizard if target document is canceled

Relationship map support for reference documents and opportunity



## CRM

Customer and vendor group name extended to 100 char.

View and update address UDFs in docs, service calls, and address format setup

Support filtering activity reports by UDFs

Link between contact person and BP address

Hide inactive contact persons in BP master data

Currency display enhancement in BP master data

Configuring display of employee name



## Project management

Interactive Gantt chart

Sorting order for project stages

# SAP Business One 10.0, FP 2108: Key highlights (4/6)



## Administration

Enhancements in document printing

Reference documents enhancements

Support attachments tab in additional objects

Delete live collaboration history by date range

Enhancements in approval process

Tab-level authorizations in BP and item master data

Hide employee no. to support DPP

Set warning for single-user validation

Recurring transaction templates enhancements

Deactivation of shipping types

Hide locked users

Enhanced user removal management

Open users – set up form in “Find” mode

Support “Find next” function in authorizations form

Manual determination of path in general settings

Change log enhancement

Add detailed errors for license imports

Enhance license balloon appearance

Main menu form settings for indirect access users

Determine paths in general settings manually

Change in “Find next” rule in form settings

Sort forms in user interface configuration template

Change log entries for authorization user groups

Authorization to use “Copy table”

Authorizations for duplicate documents and records

Support "Hide BOM in component" in SAP Crystal Reports layouts

Enhance copy of single form settings

Authorizations in payments draft report

Add authorization to “Remove opportunity”

Allow change log to read-only documents

Support ability to retrieve a default value of an SAP Crystal Reports parameter

Enhancements to report and layout manager

BP payment terms without price lists

Approval process enhancements



# SAP Business One 10.0, FP 2108: Key highlights (5/6)



## Inventory | Distribution | Production

Serial and batch numbers mgmt. enhancements

Ability to change unit of measure (UoM) group of an item

Additional authorization groups for price lists

Item group name extended to 100 characters

Support setting UoM group as inactive

Reverse and forward serial/batch no. trace report

FIFO layers report by consumption order

Updated item description applied to bill of materials (BOM)

Drill down from BOM to item master data

Inventory counting enhancements

Extend field length of item description and industry

Modify remarks and UDFs in closed production orders

Support mass deletion of BOM

Disable duplicate bar codes when duplicating items

Procurement confirmation wizard based on production orders

Change status of sales/purchase type in item master data

Open last prices report through item master data

Display preferred vendor name in item master data

Default catalog number for item

# SAP Business One 10.0, FP 2108: Key highlights (6/6)



## Platform | Extensibility

SAP HANA 2.0 platform adoption **SAP HANA®**

Support SUSE Linux Enterprise Server 15 **SAP HANA®**

Service layer configuration UI **SAP HANA®**

Service layer supports MS SQL database server

Service layer support for views on Microsoft SQL

Formatted search supports multiple triggers

Extend UDF support to additional objects

Microsoft 365 integration

Increase menu item limit to 2,000

Extend DI API and service layer coverage

API access for CR reports

Integration hub

Security enhancements

Support Microsoft SQL 2019

Extend service layer coverage

Link UDFs to system forms and UDOs

Enable DI access to system permissions

Support Visual Studio 2019 with SAP Business One studio

Enhance UI API error handling

Support queries through service layer

Add queries to menus

Sizing guide for service layer

Unification of installation and upgrade packages for SAP Business One



## Usability

New skin style **SAP HANA®**

Enhanced user interface

User name in license and add-on administration

Support 4K monitors

Revised SAP Fiori UI for Service and Sales mobile app



## Lifecycle management | Cloud

64-bit support only

Support version 10 in cloud control center (CCC)\*

Service unit to host multiple reseller operators\*

Security compliance enhancements incl. add-ons

User and license enhancements

High availability for SAP Business One, version for SAP HANA ,10.0

Tenant configurator enhancements

Documentation from product software installation moved to SAP Help Portal

\* Delivered through SAP Business One Cloud 1.1, patch level 16

# Recent innovations: Native Web client

Based on SAP Fiori Design rapid deployment solution and SAPUI5



- Create, process (incl. copy to/copy from), preview and print sales quotations, orders, deliveries, returns, A/R invoices, A/R reserve invoice, and A/R credit memo<sup>1</sup>
- Create, process, preview, and print sales opportunities
- Outgoing SnB/Bin location selection
- Create, process, preview, and print purchase quotation and purchase order<sup>2</sup>
- Preview and print other A/P documents
- Support for service calls and solution knowledge base
- Create and update BP and item master data
- Support for BP catalog number
- Multiple branches
- Freight charges
- Exchange rate entry
- Relationship map
- Create and process activities and notifications
- Advanced analytics content and editor
- Enterprise search **SAP HANA**<sup>®</sup>
- Supported on SAP HANA and MS SQL database servers
- Support for single sign-on (SSO)
- Authorizations and data ownership
- Approval process and drafts
- User-defined fields, tables, and objects
- VSCODE plug-ins (URL mashup, apps)
- iFrame as a tile support
- Customizable home page
- Supported message preference
- Flexible list views
- Supports 28 display languages
- High-contrast UI theme
- Extend localization coverage
- Microsoft 365 (Excel)
- Web assistant support

1. A/R credit memo supported in read-only for India

2. Purchase quotation in read-only for India, purchase order in ready-only for India and Brazil

# SAP Business One

## Product road map overview – Key themes and capabilities

### Recent innovations

#### Core

- Web client release, covering sales and analytics functionality
- Continuous innovations based on market feedback (Customer Influence program)
- SAP HANA 2.0 and SUSE 15 support with SAP Business One, version 10
- Document Information Extraction integration (invoice scanning)

#### Globalization

- Electronic documents service enhancements
- Italy – 2022 electronic invoice enhancements
- Mexico – Withholding tax on document rows
- Argentina, Portugal – QR code printing on documents
- UK – Making Tax Digital and Brexit updates
- Russia – Electronic tax invoice
- India – E-way bill enhancements
- EU – VAT ID validation and verification
- Greece – E-book enhancements

#### Analytics

- Innovations based on SAP HANA
- Support for QR code generation

#### Mobile

- Service and sales apps update for MS-SQL Server on iOS and Android

#### Extensibility

- Enhanced Service Layer API
- SAP Crystal Reports API
- Microsoft 365 integration (Word, Excel, OneDrive)
- Service layer supports Microsoft SQL

#### Cloud

- Improved Web experience
- Tenant configuration wizard
- Cloud infrastructure optimization
- Dockerized version of SAP Business One integration (iPass)

### Planned innovations<sup>1</sup>

#### Core

- Web client extended sales, purchasing, payments, service, and analytics functionality
- Continuous innovations based on market feedback (Customer Influence)
- Intelligent ERP elements, such as machine learning – business card scanning
- Simplified landscape and lower number of components
- Microsoft Teams integration

#### Globalization

- Electronic documents service enhancements
- Integration to the digital compliance platform from SAP
- Germany – ELSTER: Adoption of new ERiC versions
- EU One-Stop Shop reporting support
- India – E-billing bulk invoice
- Israel – Tax groups introduction
- France – FEC audit file enhancements
- Japan – Qualified invoice method support
- Portugal – Digital series reporting (ATCUD)
- Chile – Folio number enhancements
- Argentina – Withholding tax retention calculation by document
- QR code formula builder

#### Analytics

- SAP HANA 2.0 features

#### Extensibility

- Enhance service layer API
- Web client extensibility

#### Cloud

- Support for advanced user authentication
- Tenant configuration enhancements
- Staged introduction for regions and countries

### Product direction<sup>1</sup>

#### Core

- Extended Web client business process coverage
- Continuous innovations based on market feedback (Customer Influence)
- Optimized scalability and performance
- Simplification of landscape and deployment, support for containerization approach

#### Globalization

- Enhancement of existing markets/regions
- Integrations to electronic fiscal services
- IFRS compliance

#### Analytics

- Insight to action (data mining)
- Predictive, pervasive, and scalable
- Built-in content

#### Mobile

- Continuous innovations based on market feedback

#### Extensibility

- Enhanced service layer API
- Enhanced Web client extensibility
- Event service support
- Model for partner content in the integration hub

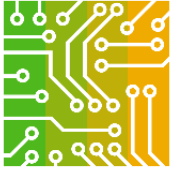
#### Cloud

- Support for advanced user authentication
- Deeper integration to MS Active Directory
- Reduction of TCO

1. This is the current state of planning and may be changed by SAP at any time without notice.

# Planned innovations: Core

## Global, highly scalable real-time ERP



### Feature

---

Optimize core business processes and continuously delivering enhancements and new features, based on [Customer Influence](#)

- Optimize functions in logistics and inventory
- Optimize functions in CRM and service
- Optimize functions in financial
- Enhance usability
- Enhance Microsoft 365 integration
- Integrate SAP solutions adding value for SAP Business One customers
- Automate online banking (integration of payment gateways used at SAP)
- Use machine learning for business cards scanning (through integration to Document Information Extraction API)
- **Lifecycle management**
- Optimize upgrade and installation processes
- Optimize data import functions

### Feature value

---

- Increased attractiveness for new and installed base
- Solid core foundation for building vertical solutions
- Users enabled to consume core business processes across multiple platforms
- Simplification, greater customer and partner satisfaction, reduced TCO
- Latest versions of operating systems, database engines, or browsers used to apply innovations even faster in day-to-day business operations

This is the current state of planning and may be changed by SAP at any time.

# Planned innovations: Web client

## Extend functional scope



### Feature

#### Extended business logic coverage

- Extended sales and purchasing coverage
- Service
- Payments support
- Inventory management
- Project management
- Human resources

#### Analytics, reporting, and printing

- Extended analytics
- Additional reporting content
- Design capabilities
- Support printing

#### Integration and extensibility

- Providing extensibility capabilities
- Microsoft Teams integration
- Extended Microsoft 365 integration

### Feature value

- Extended target audience by providing increased functional coverage
- Extending market coverage
- Increased competitiveness
- Increased efficiency and productivity
- Reduction of TCO



# Planned innovations: Globalization

## Legal compliance and localization enhancements



### Feature

- Legal compliance and localization enhancements generically or specifically (legal requirements, business practice, statutory reporting, and default values)
- Localization expansion to potential new markets, increased number of supported languages, and harmonized functions across localizations
- Electronic documents framework enhancements and country-specific built-in content using the electronic file manager add-on, electronic documents service, and integration framework
- Electronic documents service component extensions
- Integration and leveraging of existing cloud services from SAP for legal adaptations, such as the digital compliance platform, and SAP solutions for advanced compliance reporting
- IFRS
- EU – VAT One-Stop Shop reporting support
- Germany – ELSTER: Adoption of the new ERiC versions
- Israel – VAT groups introduction
- France – FEC audit file enhancements
- India – E-way bill and e-billing enhancements
- Russia – VAT layouts, ledgers and electronic tax invoice enhancements
- Japan – Qualified invoice method support
- Portugal – Digital series reporting (ATCUD)
- Chile – Folio number enhancements
- Argentina – Withholding tax retention calculation by document
- Argentina – E-checks support

### Differentiating factor

- Helping businesses to run worldwide, increased relevance for new customers and installed base
- Facilitating customers in meeting their legal obligations (accounting, tax, invoicing, and reporting); legal compliance
- Increased localization competitiveness that helps to win in the cloud globally; significant competitive advantage; and differentiating factor
- Increased customer and partner satisfaction, merged back-legal add-ons that reduce costs, lower TCO
- Higher reporting flexibility for IFRS, U.S. GAAP, group reporting, or any local legal reporting requirements

This is the current state of planning and may be changed by SAP at any time.

# Planned innovations: Analytics and reporting

Simplify with meaningful business reports and accelerate decision-making



## Feature

### SAP Business One, version for SAP HANA

Further leverage SAP HANA capabilities by reusing scenarios of SAP HANA 2.0 platform

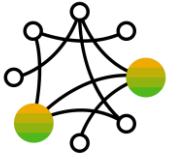
- Better real-time visibility and deeper analytics scenarios based on pervasive analytics
- New functions such as demand planning and payment/invoice auto-matching

## Feature value

- SAP HANA as a platform for accelerated partner co-innovation
- Ability to make faster, better-informed decisions, as more business users have the capability to retrieve any required information completely independently with intuitive and easy-to-use features
- Comprehensive views of key information, such as customers or financials, which offer efficiency optimization
- Realization of more sophisticated business processes; new scenarios that help in tackling “unsolvable” problems
- Exposing the full potential of SAP HANA to the ecosystem

# Planned innovations: Extensibility

Extend SAP Business One with fully integrated solutions horizontally and vertically



## Feature

### SAP Business One core

- Enhance service layer API
- Web client extensibility
- Event service support

## Feature value

- Significantly expand the addressable market by providing a robust API for both SQL and SAP HANA
- Optimize partner support by realizing requirements for flexible integration in customer projects
- Enable solutions to run smoothly in the cloud by detaching the applications from the underlying infrastructure

# Planned innovations: Integration framework

An extremely strong platform



## Feature

### Integration framework

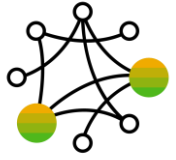
- Completing the business process model and notation (BPMN)-based management layer
- Mapping between DI API and service layer
- Flexible event-handler mechanism to replace event sender
- Support advanced user authentication

## Feature value

- Straightforward and extremely flexible capabilities that make the integration framework the key differentiator for SAP Business One, turning SAP Business One into a robust business platform
- Helping ensure integrations with little or no effort to other SAP and third-party applications
- Extending system and business network capabilities
- Data provision to any external system and data consumption from any external provider

# Planned innovations: Intercompany integration solution

## Complementary add-on from SAP



### Feature

#### Intercompany integration solution for SAP Business One

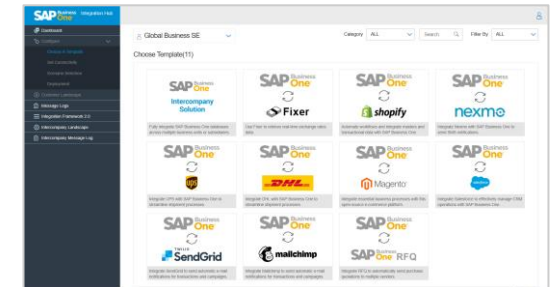
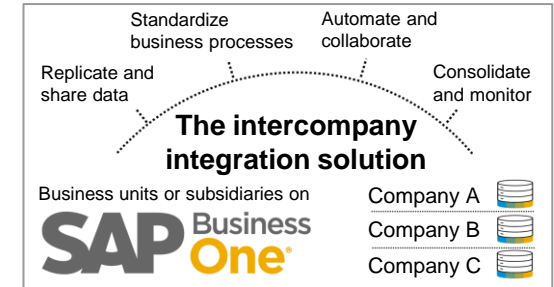
- Functional improvements such as automatic replication of UDF and UDT definitions to all branch companies
- A/R service invoice allocation
- Using the service layer where useful
- Further meaningful extensions that are requested through Customer Influence program

#### Integration hub for SAP Business One

- Additional preconfigured templates for the integration hub to integrate most-popular Web shops, CRM systems, expense management systems, SAP applications, or social platforms, such as WooCommerce, SAP S/4HANA, logistics scenario, and Sugar CRM
- Further simplifications in use and setup
- Model for partner content in the integration hub

### Feature value

- Intercompany integration harmonizes across SAP Business One databases, massively reducing total operating costs, and optimizing business processes beyond countries or legal entities
- Tailor-made solution integrating cloud-based business applications and services
- Addressing typical requirements for fast digital integration
- Preconfigured templates with mapping and configuration defaults minimize time and cost for integration
- Offering inexpensive off-the-shelf solutions, most comprehensive implementation even without detailed knowledge of the solutions
- Harmonizing technology across multiple systems, data consistency across applications



This is the current state of planning and may be changed by SAP at any time.

# Planned innovations: Mobile apps for the enterprise

## Mobilize your workforce to support flexibility and efficient processes



### Feature

- Service app that allows ticket creation
- Use of native device capabilities of latest devices
- Evolving service layer into a platform for building innovative mobile solutions for verticals

### Feature value

- Significant expansion of the addressable market, driving adoption
- Increased workforce productivity
- New collaboration methods and business practices with an intuitive and simplified user experience



# Planned innovations: Cloud

## Simple consumption and best scaling



### Feature

#### SAP Business One Cloud, SAP-hosted option

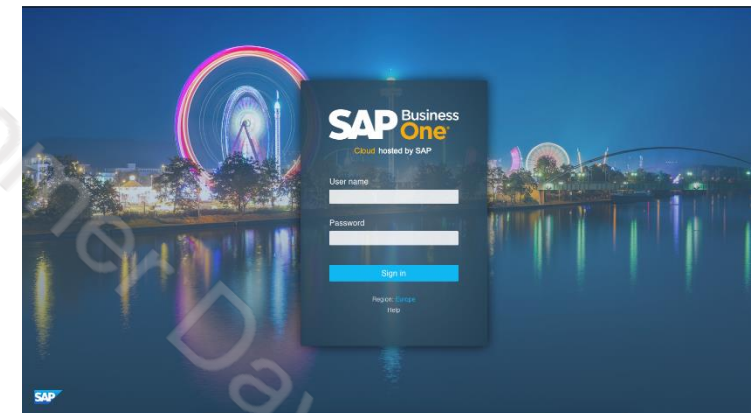
- Improved self-services for resellers
- Support for advanced user authentication
- Adoption of an integration framework 2.0 for SAP Business One to support shared service units (through iPass)
- Staged introduction for regions and countries

#### SAP Business One Cloud, partner-hosted option

- Enhanced tools in SAP Business One Cloud 1.1 cloud control center focusing on hosting partners, improvements for user experience, monitoring, and performance
- Support for advanced user authentication
- Enhanced tenant configurator
- Integration to Microsoft Active Directory organizational units
- Lifecycle management (patch delivery and maintenance)

### Feature value

- Technology that scales with the business and provides a competitive advantage
- Attractive offering for an increasing number of companies looking for cloud deployment
- Easier and affordable deployment; reduction of TCO
- Better tools for hosting partners
- New opportunities for partners to grow their business
- Short time from purchase to delivery
- Flexible, simple, and intuitive solutions for running an efficient business and managing hosting operations



This is the current state of planning and may be changed by SAP at any time.

# Learn more about SAP Business One

- ▶ [SAP Business One YouTube Channel](#)
- ▶ [Solution Brief](#)
- ▶ [SAP Help Portal](#)
- ▶ [SAP Support Portal](#)
- ▶ [SAP Learning Hub](#) – Training Material
- ▶ [SAP Community for SAP Business One](#)
- ▶ [SAP Business One Cloud](#) (Partners Only)
- ▶ [Customer Influence Session](#)  
(Customers and Partners Only)
- ▶ Central Web Site for Web Client Content:  
<https://learnbusinessonewebclient.com/>



Confidential for FMS Customer Day

**Thank you**

Follow us



[www.sap.com/contactsap](http://www.sap.com/contactsap)

Studio SAP | 55584enUS (21/10)

© 2021 SAP SE or an SAP affiliate company. All rights reserved.

No part of this publication may be reproduced or transmitted in any form or for any purpose without the express permission of SAP SE or an SAP affiliate company.

The information contained herein may be changed without prior notice. Some software products marketed by SAP SE and its distributors contain proprietary software components of other software vendors. National product specifications may vary.

These materials are provided by SAP SE or an SAP affiliate company for informational purposes only, without representation or warranty of any kind, and SAP or its affiliated companies shall not be liable for errors or omissions with respect to the materials. The only warranties for SAP or SAP affiliate company products and services are those that are set forth in the express warranty statements accompanying such products and services, if any. Nothing herein should be construed as constituting an additional warranty.

In particular, SAP SE or its affiliated companies have no obligation to pursue any course of business outlined in this document or any related presentation, or to develop or release any functionality mentioned therein. This document, or any related presentation, and SAP SE's or its affiliated companies' strategy and possible future developments, products, and/or platforms, directions, and functionality are all subject to change and may be changed by SAP SE or its affiliated companies at any time for any reason without notice. The information in this document is not a commitment, promise, or legal obligation to deliver any material, code, or functionality. All forward-looking statements are subject to various risks and uncertainties that could cause actual results to differ materially from expectations. Readers are cautioned not to place undue reliance on these forward-looking statements, and they should not be relied upon in making purchasing decisions.

SAP and other SAP products and services mentioned herein as well as their respective logos are trademarks or registered trademarks of SAP SE (or an SAP affiliate company) in Germany and other countries. All other product and service names mentioned are the trademarks of their respective companies.

See [www.sap.com/trademark](http://www.sap.com/trademark) for additional trademark information and notices.